


Corno I.

MOZART
COSÌ FAN TUTTE

N° 25. Rondo.
Adagio.

in E. Viol. I.



36 Allegro moderato.



110 *rallentando a tempo*



GIOACHINO ROSSINI

Il turco in Italia

Ouverture

Adagio [♩ = 88]

11 Solo I. in F

fp espressivo

p

tr

tr

smorz. a poco

p

13

16

18

21

24

ROSSINI
L'ITALIANA IN ALGERI

CORNO I.

N. 2

CAVATINA

in Mi \flat
Andante

Solo
p
tr
4
7
13
68
Solo
p
18
83
86
89
sf
11

N. 4 Recitativo e Romanza
(GIULIETTA)

Andante Maestoso e sostenuto

f *dim.* *Solo* *pespress.*

lunga *lente* *stent.*

I PURITANI

N. 8 DUETTO FINALE II.

in Fa

Andante sostenuto

Musical notation for measures 1-5, piano accompaniment. The music is in common time (C) and features a series of chords with moving bass lines. Measures 1-5 are marked with numbers 1 through 5 below the notes.

Musical notation for measures 6-10, piano accompaniment. Measure 6 is marked with a '6' below. Measure 7 contains a 'Solo' instruction and a 'p' dynamic marking. The music continues with flowing eighth-note patterns.

Musical notation for measures 11-15, piano accompaniment. The music features a continuous eighth-note accompaniment pattern in the right hand.

Musical notation for measures 16-20, piano accompaniment. Measures 17-18 contain triplets marked with a '3' and the instruction 'sostenuto'. Measures 19-20 are marked 'a piacere'.

Musical notation for measures 21-25, piano accompaniment. Measure 21 is marked with a boxed '47'. Measures 22-23 feature a double bar line and a '2' marking, with 'pp' dynamics. Measures 24-25 continue with the '2' marking and 'pp' dynamics.

Musical notation for measures 26-30, piano accompaniment. The music features a consistent eighth-note accompaniment pattern. The dynamic marking 'p sottovoce' is present at the beginning of the section.

Siegfried

Zweiter Aufzug.

Richard Wagner

Mässig bewegt. [$\text{♩} = 108$]

Ein Horn (in F)
auf dem Theater

Die Fermaten sehr lang
und bedeutungsvoll.

② *f* sehr kräftig sehr stark ausgehalten

③ *p* weich gestoss.

④ *p* *cresc.* *accel.*

f *dim.* *p* ⑤ *P zart*

p *p* *poco cresc.*

f *dim.* *più p*

[♩ = 100]
Lustig, und immer schneller und schmetternder

pp ⑦ *p* *cresc.*

immer stärker

[♩ = 122 ~ 130]
sehr schnell

ff

ff ⑧ [♩ = 140]

ff *p* [♩ = 120]

cresc. [molto accelerando] *ff* [♩ = 144]

LUDWIG VAN BEETHOVEN

Sinfonia n. 2 in re maggiore

op. 36

A

Larghetto

in MI/E

8

27

43

63

72

83

94

p *cresc.* *p* *p* *sf* *ff* *sf* *ff* *f* *f* *pp* *pp* *p* *cresc.* *f* *sf* *p* *cresc.* *f* *pp* *p cresc. p* *cresc.* *f*

A

B

C

B

In LA

240

254

f *pp* *pp* *p* *cresc. f sf* *sf* *f* *p*

G

LUDWIG VAN BEETHOVEN

Sinfonia n. 6 in fa maggiore, op. 68

"Pastorale"

A

In F

Lustiges Zusammensein der Landleute

93 40 Va., Vc. Horn II
cresc. p dolce

138
cresc. dolce

154
cresc. sempre più stretto a tempo Allegro (♩ = 132)
f Vc., Kb.

Detailed description: This block contains the musical notation for the first movement, 'Lustiges Zusammensein der Landleute'. It features three staves. The top staff is for Violins and Violas, starting at measure 93 and marked '40'. The middle staff is for Horn II, starting at measure 138. The bottom staff is for Violas and Cellos, starting at measure 154. The music is in F major and 3/4 time. It includes dynamic markings such as 'cresc.', 'p dolce', and 'sempre più stretto', and a tempo change to 'a tempo Allegro' with a tempo marking of ♩ = 132.

B

Hirtengesang - Allegretto

in F Klar. I Solo
p cresc. p

5

Detailed description: This block contains the musical notation for the second movement, 'Hirtengesang - Allegretto'. It features a single staff for Clarinet I, starting at measure 5. The music is in F major and 3/4 time. It includes dynamic markings such as 'p', 'cresc.', and 'p'.

C

55 Viol. I
p cresc. p

4 4 Va. pizz. p cresc. 1 2

Detailed description: This block contains the musical notation for the third movement, 'Hirtengesang - Allegretto'. It features two staves. The top staff is for Violin I, starting at measure 55. The bottom staff is for Viola, starting at measure 4. The music is in F major and 3/4 time. It includes dynamic markings such as 'p', 'cresc.', and 'p'.

FELIX MENDELSSOHN

Sogno di una notte di mezza estate

A

Corno I in Mi

Con moto tranquillo.

Nº 7. *p dol.*

p *mf* *cresc.*

dim. *mf* *cresc.* *p* *cresc.*

B

8 B 13

C *dol.*

dol. *cresc.* *sf*

dim. *dol.* *cresc.* *dol.*

p *E*

pp 1 2 3 4 2

Anton Bruckner
Symphony No. 4 in Eb Major (Romantic)

1. SATZ

Horn 1 in F

Bewegt, nicht zu schnell

Solo
mf immer deutlich hervortretend

p dim. *p*

cresc. *mf cresc.*

cresc. sempre *molto cresc.*

ff

Measures 1-50 are shown on six staves. The score includes various musical notations such as slurs, accents, and dynamic markings. Measure numbers 10, 20, 30, 40, and 50 are boxed. Fingerings (1, 2, 3) and breath marks (b) are indicated throughout the passage.

Bruckner — Symphony No. 4 in Eb Major

6

Horn 1 in F

2. SATZ. ANDANTE

Andante quasi Allegretto



70 6 *Ma.* 80

mf *p legato sempre* *dim.* *PPP*

1 *P* *dim.* *PP* 1

E *mf hervortretend* *mf hervortretend*

F 110 *f* *ff*

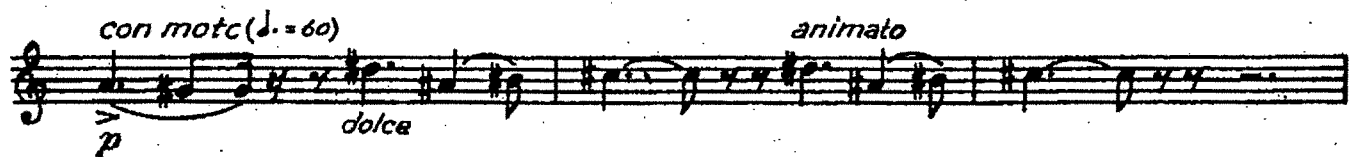
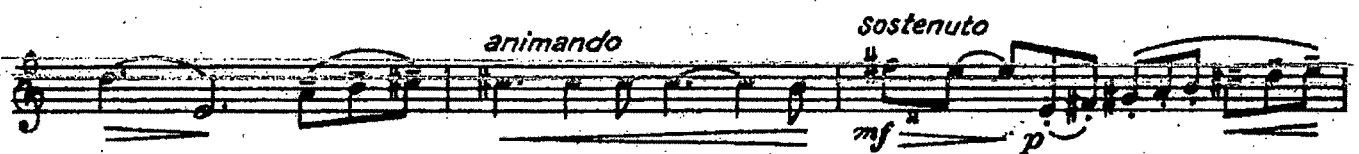
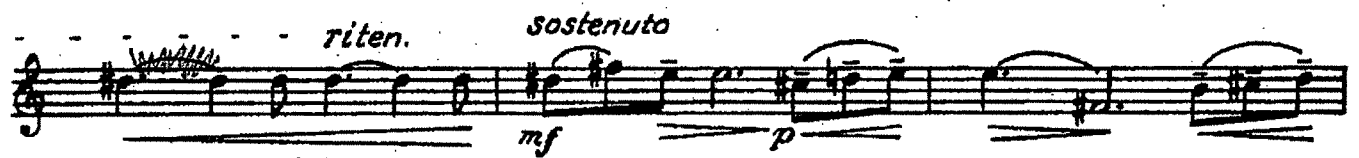
120 8

PYOTR ILYICH TCHAIKOVSKY

Sinfonia n. 5

II

Andante cantabile, con alcuna licenza (♩. = 54)



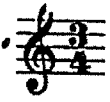
Horn I

BRAHMS

SINFONIA N° 1

in E
Andante sostenuto

II.



III.

in C
Adagio



JOHANNES BRAHMS
Sinfonia n. 2 in re maggiore
op. 73

A

In RE

453 *p* Solo *dolce* *un poco* *cresc.*
463 *stringendo* *ritard.* *dim*
473 *in tempo, ma più tranquillo* *mp espress.* *cresc.*

B

in H basso
Adagio non troppo

poco f *p*
10 Vcl. *p* *mf* *p* **A** Solo *p*
19
25 *dim.* *p* *cresc.* *f* *dim* *p* *Ob.*

Johannes Brahms
Symphony No. 3 in F Major, Op. 90

Horn I in C

Allegro con brio



94 *p* *espr.* *f* *cresc.* *f*

108 *p* *dim.* *poco rit.* *Un poco sostenuto* *rit.*

5 **G** **H**

Poco Allegretto



84 *p* *espr.* *lunga* **F**

102

110

7 Klar. Fag. I

Allegro



50 *ff* *f* **C**

57

194 **L**

Gustav Mahler
Symphony No. 5 in C# Minor

Corno obbligato. (TUTTO IL MOVIMENTO)
1. 2. tacet.

3. Scherzo.

Kräftig nicht zu schnell.
(in F (obligato) poco rit. a tempo)

2 *p* *ff* *ff* *ff* 6

keck. 1

13 2 17

5

3 23 4 18

5 15

6 *Etwas ruhiger.* 4 7 *Tempo I keck!* 2 *ff*

5

1

6 17 11 *Allmählich ruhiger* 19

Mahler — Symphony No. 5 in C# Minor

Corno obbligato.

9 18 10 *Etwas zurückhaltend. rit.*
quasi atempo *pp = ff* *molto portamento*
zurückhaltend. *schalltr. auf.* *rit.* *verklingend*
lang ppp *2* *f* *atempo* *rit.* *verklingend.*
zurückhaltend *atempo I.* *rit.* *pp*
atempo *1* *3* *p* *rit.* *11* *Molto moderato*
schalltr. auf. *gewöhnlich. rit.* *poco rit.* *dim. ppp* *10* *2*
atempo *6* *Fließender, aber immer gemässigt.*
17 *1* *p* *molto espress.*
12 *espress.*
21
13 *Nicht eilen.*
8 *p* *molto espress.* *p* *p*
15 *rit.* *atempo* *cresc.* *f* *1* *molto rit.*
atempo molto moderato *Allmählich bewegter, ins Tempo I übergehend* *15* *Tempo I*
pp *5* *6* *fsf* *sf* *6* *21* *ff*
4 *16* *10*

Mahler — Symphony No. 5 in C# Minor

Corno obbligato.

4

17 2 *molto rit.* *al tempo I.* *pp* *ff* *sfz* *fp* 5

9 18 11 19 14

5 20 13 21 *Nicht schleppen.* *ff*

sf *fp* *ff* 1

arrangend. *arosc.* *ff* 22 16

6 23 *Co. I. III.* 6

Das Tempo merklich etwas einhaltend. 24 *Wieder zum Tempo I. Kraftig zurückkehrend. (Tempo I.)* 25 14 26 *Horn II. IV.*

14 5 15 *pp*

18 27 *ff*

8 *molto rit. schalltr. auf.* *pp* *molto cresc. ff sempre*

Mahler — Symphony No. 5 in C# Minor

Corno obbligato.

langsam.
langsam **28** *Tempo I (subito)* *Schalltr. auf!*
atempo
tanca *ppp* *3* *p* *ff* *nicht zurückhalten!*

rit. *atempo* *(schnell)* *langsam, gewöhnlich.* *atempo*
4 *f* *dim.*

rit. **29** *atempo* *1* *f* *atempo*

2 *Schalltr. auf!* *rit.*
ff *pp*

gewöhnlich. *atempo moderato.* *rit.*
p *molto rit.* *pp* *5* *f*

1 **30** *atempo (mässig)* *rit.* *rit. - - - -*
f *gewöhnlich.* *mf* *dim.* *p* *pp*

31 *Tempo I subito. Più mosso. Drängend.*
1 *8* *7* *4* *ff* *sf* *sf*

sf *ff* *sf* *ff* *Noch rascher.* *4*

fff *sf* *ff*

32 *4*
ff *ff*

ff *sf* *fff*

4. Adagietto (tacet.)
5. Rondo-Finale. (tacet.)

Mahler — Symphony No. 5 in C# Minor

Horn I.

1. TRAUERMARSCH

16 *stark hervortretend.*

f cresc. ff f molto cresc. ff

2. STÜRMISCH BEWEGT

12 *Tempo moderato (wie im ersten Teil)*

pp espress. gärt hervortretend

13 *gestopft.*

Von hier an nicht mehr schleppen!

p offen. p

hervortretend

mf p

21

p poco a poco cresc. sfz

22

molto cresc. ff schalltr. auf.

23

Mahler — Symphony No. 5 in C# Minor

Horn I.

III.

4. Adagietto (tacet.)

5. Rondo-Finale.

in F lang. Allegro. fp (verklingend.) f sp zögernd. Allegro. f

Allegro. Btwas langsamer 2 riten. f mf 8

Allegro giacoso. Frisch.

16 mf (etwas hervortretend)

1 p sf

Mahler — Symphony No. 9 in D Major

4

1. HORN IN F.

offen

p

cresc.

ff

p subito

tr

ff

Nicht mehr so langsam.

RICHARD STRAUSS

Ein Heldenleben

Op. 40

I corno *in Fa*

Lebhaft bewegt.

Musical score for I corno in Fa, measures 67-76. The score is written in bass clef with a key signature of one flat (F major/D minor) and a 4/4 time signature. It features a complex melodic line with many triplets and slurs. Dynamics include *sfz* and *dim. p*. The tempo marking is *Lebhaft bewegt.*

Musical score for I corno in Fa, measures 77-80. The score is written in bass clef with a key signature of one flat (F major/D minor) and a 4/4 time signature. It features a complex melodic line with many triplets and slurs. Dynamics include *ff*, *fff*, *dim. pp*, and *espr. p*. The tempo marking is *Lebhaft bewegt.*

in F

pp

1. kräftig heiter

f

2.

8

3-4.

1.

p

pp

f

in FA

mf

fp

f

dim.

1.

mf

f

f

in FA

ritard. Langsam

ff *dim.* *mf* *molto dim.* *pp* *p espr.*

pp *cresc.* *p espr.*

espr. *f*

pp *f* *dim.* *p* *espr.*

poco ritard. (immer ruhiger)

molto dim. *espr.*

immer langsamer

poco a poco dim. *pp*

Richard Strauss
Till Eulenspiegel's Merry Pranks
Op. 28

Horn I in F.

Gemächlich. $\text{♩} = \text{des } \frac{4}{8}$ *allmählich lebhafter*

p

Volles Zeitmass. (sehr lebhaft)

cresc. *mf* *cresc.*

ff

10

ff

ff

mf marcato

fp *mf* *fp* *f*

1

M. RAVEL — PAVANE POUR UNE INFANTE DÉFUNTE

Lent $\text{♩} = 54$

18
n Sol

pp

p *pp expressif*

Autorisation des Editions Max Eschig à Paris
Copyright 1910 by E. Dismels

CONCERTO

CORNI in FA

MAURICE RAVEL

Allegramento



3

in FA

25 Andante *al piacere*
Solo
p espressivo

26

ŠOSTAKOVIČ

CONCERTO PER VIOLONCELLO

Musical notation for measures 19 and 20. Measure 19 is in bass clef, and measure 20 is in treble clef. Both measures feature a series of eighth notes with accents and slurs.

Musical notation for measure 25, featuring a dynamic marking of *ff* and a series of eighth notes with accents.

Musical notation for measure 26, featuring a dynamic marking of *ff* and a series of eighth notes with accents.

Musical notation for measure 27, featuring a series of eighth notes with accents.

Musical notation for measure 30, featuring a dynamic marking of *ff* and a series of eighth notes with accents.

Musical notation for measure 31, featuring a series of eighth notes with accents and slurs.

Musical notation for measure 32, featuring a series of eighth notes with accents and slurs.

Musical notation for measure 33, featuring a series of eighth notes with accents and slurs.

Musical notation for measure 34, featuring a series of eighth notes with accents and slurs.

Section separator line with a double bar line.

Musical notation for measures 38, 39, and 40. Measure 38 is marked *Moderato* with a tempo of $\text{♩} = 66$. Measure 39 includes the instruction *tenuto*. Measure 40 includes the instruction *mp espr.*. The passage concludes with a dynamic marking of *dim.*

Musical notation for measure 41, featuring a series of eighth notes with accents and slurs.

ŠOSTAKOVIČ - SINFONIA N° 5

CORNO I

Moderato

cor. I

Handwritten musical score for Horn I, Moderato section. The score consists of five staves of music. The first staff begins with a dynamic marking of *f* and includes a *fesgr.* (faccetta) marking. The second staff features a *cresc.* (crescendo) marking and a dynamic of *f*. The third staff has a dynamic of *f*. The fourth staff has a dynamic of *f*. The fifth staff ends with a *dim.* (diminuendo) marking. There are various musical notations including slurs, accents, and dynamic hairpins throughout the passage.

36 Largamente

Handwritten musical score for Horn I, *Largamente* section. The score consists of three staves of music. The first staff begins with a dynamic marking of *fff* and is marked *Largamente*. The second staff has a dynamic of *sf*. The third staff is marked *molto riten.* (molto ritardando) and ends with a *tenuto* marking. The music is characterized by wide intervals and a slow, expressive feel.

A small musical notation at the bottom left, possibly a correction or a specific performance instruction. It shows a few notes on a staff with a dynamic marking of *coll.* (collato).

(I.)

Coro Solo

Handwritten musical score for section (I.) consisting of four staves. The first staff begins with a treble clef and a key signature of one sharp (F#). The music features a series of notes with slurs and a dynamic marking of *p*. A bracket above the first staff is labeled "Coro Solo". A downward-pointing arrow is positioned above the second staff. The second and third staves continue the melodic line with slurs and a boxed measure number "40" above the first measure. The fourth staff starts with a boxed measure number "41" and concludes with a double bar line.

IV. (ALLEGRO NON TROPPO)

Handwritten musical score for section IV, consisting of five staves. The first staff begins with a treble clef and a key signature of one sharp (F#). It is marked "Solo espress." and "mp,". The music features a series of notes with slurs and a dynamic marking of *mp*. The second and third staves continue the melodic line with slurs. The fourth and fifth staves conclude the section with slurs and a double bar line.